

## Clusiidae

Gerhard Bächli (1998 Checklist: Bernhard Merz)

Last update: Jul 2024

**Diagnosis:** Small flies (3-6 mm). Body slender, yellow, reddish yellow with dark brown to black and occasionally some whitish markings. Head small; antennae with short scape, pedicel laterally with short angular extension, third antennal segment short; vibrissae present; postocellar setae present or absent. Thorax long and narrow. Wings rather narrow; costa with subcostal break only, Sc complete, anal vein not reaching wing margin; usually the anterodistal part is darkly infuscate. Legs, especially in males, with setose fore femora; tibiae with preapical dorsal setae at least on mid tibiae. Abdomen narrow.

**Biology:** Clusiidae are typical inhabitants of forests with a rich supply of dead wood. The xylosaprophagous larvae develop in the decaying wood of fallen trunks and stumps, pupariate inside the rotten wood and overwinter in the pupal stage. The adult flies can best be observed sitting or walking on dead tree trunks; they fly away only when disturbed, but soon return to the same or the nearest convenient log.

**Nomenclature and classification:** According to Lonsdale (2017).

**Number of species:** CH: 10 (1998 Checklist: 8),  
BE: 10, CZ: 12, DE: 7, IT: 3, NL: 7, UK: 7, Europe: 14, World: 636.

**Level of faunistic knowledge in Switzerland:** Good.

**General references:** Sasakawa (1998), Lonsdale & Marshall (2007), Lonsdale (2017).

**References to the Swiss fauna:** Merz (1998), Merz et al. (2002). Bächli & Merz (2008).

### Checklist

*Clusia* Haliday, 1839

- *flava* (Meigen, 1830) !

*Clusiodes* Coquillett, 1904

- *albimanus* (Meigen, 1830) !

- *caledonicus* (Collin, 1912) !

- *gentilis* (Collin, 1912) !

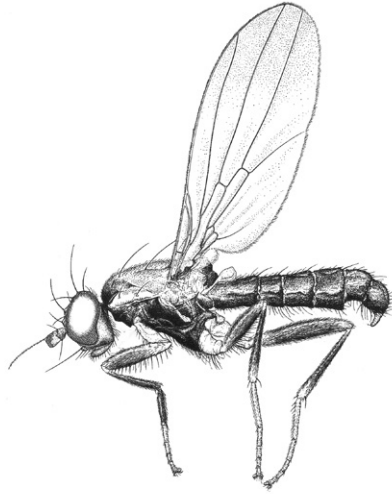
- *geomyzinus* (Fallén, 1823) !

- *ruficollis* (Meigen, 1830) !

- *verticalis* (Collin, 1912) !

*Hendelia* Czerny, 1903

- *beckeri* Czerny, 1903 !



*Clusiodus albimanus*,  
male (CMPD3, p.219).

*Heteromerhingia* Czerny, 1903

- *nigrimana* (Loew, 1864) !

*Paraclusia* Czerny, 1903

- *tigrina* (Fallén, 1820) !

## References

- Bächli G. & Merz B. 2008. Zur Fauna ausgewählter Fliegenfamilien (Diptera, Brachycera) im Naturschutzgebiet Wildenstein bei Bubendorf (Kanton Basel-Landschaft). Mitteilungen der naturforschenden Gesellschaft beider Basel 8: 53-62.
- Lonsdale O. 2017. World Catalogue of the Druid Flies (Diptera: Schizophora: Clusiidae). Zootaxa 4333(1): 1-85.
- Lonsdale O. & Marshall S.A. 2006. Redefinition of the Clusiinae and Clusiodinae, description of the new subfamily Sobarocephalinae, revision of the genus *Chaetoclusia* and a description of *Procerosoma* gen.n. (Diptera: Clusiidae). European Journal of Entomology 103: 163-182.
- Merz B. 1998. 75. Clusiidae. In: Merz B., Bächli G., Haenni J.-P. & Gonseth Y. (eds). Diptera - Checklist. Fauna Helvetica 1: 276. CSCF / SEG, Neuchâtel, 369 pp.
- Merz B., Bächli G. & Haenni J.-P. 2002. Erster Nachtrag zur Checkliste der Diptera der Schweiz. Mitteilungen der Entomologischen Gesellschaft Basel 51(3-4)(2001): 110-140.
- Sasakawa M. 1998. 3.16. Family Clusiidae. In: Papp L. & Darvas B. (eds). Contributions to a Manual of Palaearctic Diptera (with special reference to flies of economic importance). Vol. 3., Higher Brachycera: 219-225. Science Herald, Budapest., 880 pp.