

Chironomidae

Brigitte Lods-Crozet (1998 Checklist: Brigitte Lods-Crozet)

Last update: Jul 2024

Diagnosis: Small to large larvae (3-60 mm) having a well-developed, complete, non-retractile head capsule. The larvae may be distinguished from other nematocerous larvae by the absence of spiracles (apneustic), paired prolegs on first thoracic and terminal abdominal segments and paired procerci bearing apically a tuft of setae on the terminal abdominal segment. The pupal stage (3-22 mm) is short-lived compared with the larval stage (duration few hours to several days). The pupa is comma shaped, with a swollen cephalothorax and dorsoventrally flattened abdomen. The paired thoracic respiratory organs are tubular or ramified and the two anal lobes form a swimming lobe bearing setae and/or spines. Adults are very small to large (1-15 mm) with no marked sexual dimorphism, except for antenna and genitalia. Male have generally prominent and plumose antenna. The mouthparts are shortened and characteristic of non-biting midges. Wing venation is reduced relative to the basic Dipteran pattern. Abdominal segments are dorsoventrally flattened without prominent pleurae. The female abdomen is shorter and more swollen than that of the male. Identification keys are generally based on male adult material. Five subfamilies are present in Switzerland.

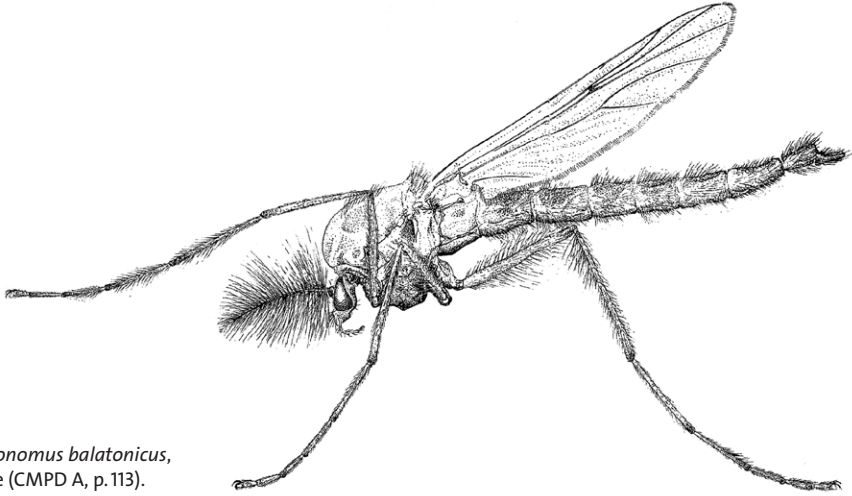
Biology: Most species are univoltine to bivoltine but three or more generations per year are not unusual. A substantial number of species, especially among the subfamily Orthocladiinae, are multivoltine with continuous recruitment for much of the year. Larvae have different feeding behaviours and can be herbivorous, detritivorous and/or carnivorous. Most species of the Tanypodinae subfamily are predators and have the ability to pierce and withdraw body fluids from their prey. Adults may feed on flowers. They colonise every type of freshwater environment from glacial waters to the deepest parts of lakes and moist soils. The pupa swims to the surface where the adult usually emerges within a few seconds. Adult midges live for up to a few weeks, but for many species, adult life lasts just a few days.

Nomenclature and classification: According to Fauna Europaea (Spies & Saether 2013), with some minor changes.

Number of species: CH: 455 (1998 Checklist: 290),
AT: 596, BE: 305, DE: 767, FI: 782, FR: 677, GB: 606, IT: 529, NL: 551, RO: 403, Europe: ~1200,
World: > 15'000.

Level of faunistic knowledge in Switzerland: Medium

General references: Andersen, Cranston & Epler (2013) [key to genera, larvae, Holarctic], Langton (1991) [key to species, pupal exuviae, West Palaearctic], Orendt (2008) [key to genera, pupal exuviae, Europa], Wiederholm (1986) [key to genera, pupae, Holarctic], Wiederholm (1989) [key to genera, male adults, Holarctic].



Chironomus balatonicus,
male (CMPD A, p.113).

References to the Swiss fauna: Bächli et al. (2014), Lods-Crozet (1998), Merz et al. (2002, 2006).

Checklist

Chironominae

Benthalia Lipina, 1939

- *carbonaria* (Meigen, 1804) !
- = *dissidens* (Walker, 1856)

Chironomus Meigen, 1803

(*Chironomus* s.str.)

- *aberratus* Keyl, 1961 L
- *acutiventris* Wülker, Ryser & Scholl, 1983 L
- *alpestris* Goetghebuer, 1934 L
- *annularius* auct. nec De Geer, 1776 !
- *anthracinus* Zetterstedt, 1860 !
- *balatonicus* Devai, Wuelker & Scholl, 1983 L
- *bernensis* Klötzli in Wülker & Klötzli, 1973 !
- *cingulatus* Meigen, 1830 !
- *clarus* Hirvenoja, 1962 L
- *commutatus* Keyl, 1960 !
- *crassimanus* Strenzke, 1959 L
- *entis* Shobanov, 1989 L
- *holomelas* Keyl, 1961 L
- *lacunarius* Wülker in Wülker & Klötzli, 1973 L
- *longistylus* Goetghebuer, 1921 L

- *lugubris* Zetterstedt, 1850 L
- *luridus* Strenzke, 1959 !
- *melanescens* Keyl, 1961 L
- *melanotus* Keyl, 1961 L
- *muratensis* Ryser, Scholl & Wülker, 1983 !
- *nuditarsis* Keyl, 1961 !
- *nudiventris* Ryser, Scholl & Wülker, 1983 !
- *obtusidens* (Goetghebuer, 1921) !
- *pallidivittatus* (Malloch, 1915) !
- *piger* Strenzke, 1956 L
- *plumosus* (Linnaeus, 1758) !
- *pseudothummi* Strenzke, 1959 L
- *riparius* Meigen, 1804 !
- *sororius* Wülker, 1973 L
- *striatus* Strenzke, 1959 L
- *tentans* Fabricius, 1805 L
- *uliginosus* Keyl, 1960 L
- *venustus* Staeger, 1839 L
- (*Lobochironomus* Ryser, Wülker & Scholl, 1985)
- *dorsalis* Meigen, 1818 !
 - = *longipes* (Staeger, 1839)
- *mendax* Stora, 1936 L
 - = *Einfeldia mendax* (Storå, 1936)
- *montuosus* Ryser, Wülker & Scholl, 1985 L
- *storai* Goetghebuer, 1937 L
- Cladopelma* Kieffer, 1921
- *edwardsi* (Kruseman, 1933) !
- *krusemani* (Goetghebuer, 1935) L
- *virescens* (Meigen, 1818) L
- *viridulum* (Linnaeus, 1767) !
- Cladotanytarsus* Kieffer, 1922
- (*Cladotanytarsus* s.str.)
- *atridorsum* Kieffer, 1924 L
- *mancus* (Walker, 1856) !
- *nigrovittatus* (Goetghebuer, 1922) L
- *pallidus* Kieffer, 1922 L
- Cryptochironomus* Kieffer, 1918
- (*Cryptochironomus* s.str.)
- *albofasciatus* (Staeger, 1839) !
- *obreptans* (Walker, 1856) L
- *psittacinus* (Meigen, 1830) !
- *redekei* (Kruseman, 1933) L
- *rostratus* Kieffer, 1921 L
- *supplicans* (Meigen, 1830) L
- Cryptotendipes* Lenz, 1941
- *holsatus* Lenz, 1959 L

- Demeijerea* Kruseman, 1933
 - *rufipes* (Linnaeus, 1760) L
- Demicrochironomus* Lenz, 1941
 (*Demicrochironomus* s.str.)
 - *vulneratus* (Zetterstedt, 1838) !
- (*Irmakia* Reiss, 1988)
 - *neglectus* Reiss, 1988 L
- Dicrotendipes* Kieffer, 1913
 - *lobiger* (Kieffer, 1921) !
 - *nervosus* (Staeger, 1839) !
 - *notatus* (Meigen, 1818) !
 - *pulsus* (Walker, 1856) !
 = *modestus* (Say, 1823)
 - *tritonus* (Kieffer, 1916) !
- Einfeldia* Kieffer, 1924
 - *pagana* (Meigen, 1838) !
- Endochironomus* Kieffer, 1918
 - *albipennis* (Meigen, 1830) !
 - *lepidus* (Meigen, 1830) L
 - *tendens* (Fabricius, 1775) !
- Glyptotendipes* Kieffer, 1913
 (*Caulochironomus* Heyn, 1993)
 - *imbecilis* (Walker, 1856) L
 (*Glyptotendipes* s.str.)
 - *cauliginellus* Kieffer, 1913 !
 = *gripekoveni* (Kieffer, 1913)
 - *pallens* (Meigen, 1804) L
 - *paripes* (Edwards, 1929) L
- Harnischia* Kieffer, 1921
 - *curtilamellata* (Malloch, 1915) !
- Microchironomus* Kieffer, 1918
 - *tener* (Kieffer, 1918) !
- Micropsectra* Kieffer, 1908
 - *apposita* Walker, 1856 !
 = *contracta* Reiss, 1965
 - *aristata* Pinder, 1976 ! [1]
 - *atrofasciata* (Kieffer, 1911) L
 = *bidentata* (Goetghebuer, 1921)
 - *attenuata* Reiss, 1969 !
 - *junci* (Meigen, 1818) !
 - *lindrothi* Goetghebuer, 1931 !
 - *logani* Johannsen, 1928 !
 = *groenlandica* Soegaard Andersen, 1937
 - *notescens* (Walker, 1856) L
 - *oberaarensis* Stur & Ekrem, 2008 L
 - *radialis* Goetghebuer, 1939 !

- *recurvata* Goetghebuer, 1928 L
- *roseiventris* (Kieffer, 1909) !
 - = *fusca* (Meigen, 1804)
- *schrinkelae* Stur & Ekrem, 2006 !
- *sofiae* Stur & Ekrem, 2006 !
- Microtendipes* Kieffer, 1915
 - *britteni* (Edwards, 1929) L
 - *chloris* (Meigen, 1818) !
 - *diffinis* (Edwards, 1929) !
 - *pedellus* (De Geer, 1776) !
 - *rydalensis* (Edwards, 1929) !
- Neostempellina* Reiss, 1984
 - *thienemanni* Reiss, 1984 !
- Neozavrelia* Goetghebuer, 1941
 - *bernensis* Reiss, 1968 L
 - *cuneipennis* (Edwards, 1929) ! [41]
 - *fuldensis* Fittkau, 1954 !
- Pagastiella* Brundin, 1949
 - *orophila* (Edwards, 1929) L
- Parachironomus* Lenz, 1921
 - *biannulatus* (Staeger, 1839) L
 - *frequens* (Johannsen, 1905) L
 - *gracilor* Kieffer, 1918 !
 - = *arcuatus* (Goetghebuer, 1919)
 - *monochromus* (van der Wulp, 1874) !
 - *parilis* (Walker, 1856) !
 - *tenuicaudatus* (Malloch, 1915) L
 - *vitiosus* (Goetghebuer, 1915) L
- Paracladopelma* Harnisch, 1923
 - *camptolabis* (Kieffer, 1913) L
 - *laminatum* (Kieffer, 1921) L
 - *mikianum* (Goetghebuer, 1937) L
 - *nigritulum* (Goetghebuer, 1942) L
- Paralauterborniella* Lenz, 1941
 - *nigrohalteralis* (Malloch, 1915) !
- Paratanytarsus* Thienemann & Bause, 1913
 - *austriacus* (Kieffer, 1924) !
 - *bituberculatus* (Edwards, 1929) L
 - *brevicalcar* (Kieffer, 1909) !
 - = *intricatus* (Goetghebuer, 1921)
 - *dimorphis* Reiss, 1965 L
 - *dissimilis* (Johannsen, 1905) L
 - *inopertus* (Walker, 1856) !
 - *laccophilus* (Edwards, 1929) !
 - *laetipes* (Zetterstedt, 1850) L
 - *penicillatus* (Goetghebuer, 1928) L

- *tenellulus* (Goetghebuer, 1921) !
- *tenuis* (Meigen, 1830) L
- Paratendipes* Kieffer, 1911
 - *albimanus* (Meigen, 1818) !
 - *nudisquama* (Edwards, 1929) !
- Phaenospectra* Kieffer, 1921
 - *flavipes* (Meigen, 1818) !
- Polypedilum* Kieffer, 1912
 - (*Pentapedilum* Kieffer, 1913)
 - *nubens* (Edwards, 1929) L
 - *sordens* (van der Wulp, 1874) !
 - *tritum* (Walker, 1856) !
 - *uncinatum* (Goetghebuer, 1921) !
 - (*Polypedilum* s.str.)
 - *albicorne* (Meigen, 1838) L
 - *laetum* (Meigen, 1818) L
 - *nubeculosum* (Meigen, 1804) !
 - *pedestre* (Meigen, 1830) !
 - (*Tripodura* Townes, 1945)
 - *bicrenatum* Kieffer, 1921 !
 - *pullum* (Zetterstedt, 1838) L
 - *quadriguttatum* Kieffer, 1921 L
 - *scalaenum* (Schrank, 1803) !
 - (*Uresipedilum* Oyewo & Saether, 1998)
 - *convictum* (Walker, 1856) L
 - *cultellatum* Goetghebuer, 1931 !
- Pseudochironomus* Malloch, 1915
 - *prasinatus* (Staeger, 1839) !
- Rheotanytarsus* Thienemann & Bause, 1913
 - *nigricauda* Fittkau, 1960 L
- Sergentia* Kieffer, 1922
 - *coracina* (Zetterstedt, 1850) !
- Stempellina* Thienemann & Bause, 1913
 - *bausei* (Kieffer, 1911) L
- Stempellinella* Brundin, 1947
 - *brevis* (Edwards, 1929) L
 - *edwardsi* (Spies & Saether, 2004) !
 - = *minor* (Edwards, 1929)
 - *flavidula* (Edwards, 1929) !
- Stenochironomus* Kieffer, 1919
 - (*Stenochironomus* s.str.)
 - *gibbus* (Fabricius, 1794) !
- Stictochironomus* Kieffer, 1919
 - *crassiforceps* (Kieffer, 1922) L
 - *maculipennis* (Meigen, 1818) L
 - *pictulus* (Meigen, 1830) L

- *rosenschoeldi* (Zetterstedt, 1838) L

Synendotendipes Grodhaus, 1987

- *dispar* (Meigen, 1830) !

Tanytarsus Van Der Wulp

- *aberrans* Lindeberg, 1970 L
- *bathophilus* Kieffer, 1911 !
- *brundini* Lindeberg, 1963 L
- *chyniensis* Goetghebuer, 1934 ! [2]
- *debilis* (Meigen, 1830) L
- *ejuncidus* (Walker, 1856) L
- *eminulus* (Walker, 1856) !
- *excavatus* Edwards, 1929 !
- *mendax* Kieffer, 1925 !
- *miriforceps* (Kieffer, 1921) L
- *multipunctatus* Brundin, 1947 L
- *nemorosus* Edwards, 1929 !
- *niger* Soegaard Andersen, 1937 !
- *occultus* Brundin, 1949 L
- *palettaris* Verneaux, 1969 L
- *pallidicornis* (Walker, 1856) L
- *sinuatus* (Goetghebuer, 1936) !
- *usmaensis* Pagast, 1931 L
- *verralli* Goetghebuer, 1928 !

Tribelos Townes, 1945

- *intextum* (Walker, 1856) L

Virgatanytarsus Pinder, 1982

- *ansatus* Reiss & Schürch, 1984 L
- *arduennensis* (Goetghebuer, 1922) !

Xenochironomus Kieffer, 1921

- *xenolabis* (Kieffer, 1916) !

Zavrelia Kieffer, 1913

- *pentatoma* Kieffer in Bause, 1913 L

Zavreliella Kieffer, 1920

- *marmorata* (van der Wulp, 1858) !

Diamesinae

Boreoheptagyia Brundin, 1966

- *alpicola* Serra-Tosio, 1898 !
- *legeri* (Goetghebuer, 1933) !
- *monticola* (Serra-Tosio, 1964) ! [3]

Diamesa Meigen, 1835

(*Diamesa* s.str.)

- *aberrata* Lundbeck, 1889 L
- *bertrami* Edwards, 1935 !
- *bohemani* Goetghebuer, 1932 !
- *cinerella* Meigen in Gistel, 1835 !

- *dampfii* (Kieffer, 1924) !
- *goetghebueri* Pagast, 1947 !
- *hamaticornis* Kieffer, 1924 L
- *incallida* (Walker, 1856) !
- *insignipes* Kieffer, 1908 !
- *kasymovi* Kownacki & Kownacka, 1973 L
- *laticauda* Serra-Tosio, 1964 !
- *latitarsis* (Goetghebuer, 1921) !
- *lindrothi* Goetghebuer, 1931 !
- *modesta* Serra-Tosio, 1967 L
- *nowickiana* Kownacki & Kownacka, 1975 !
- *starmachi* Kownacki & Kownacka, 1970 L
- *steinboeckii* Goetghebuer, 1933 !
- *thomasi* Serra-Tosio, 1970 ! [4]
- *tonsa* (Walker, 1856) L
- *vaillanti* Serra-Tosio, 1972 !
- *wuelkeri* Serra-Tosio, 1964 !
- *zernyi* Edwards, 1933 !

Potthastia Kieffer, 1922

- *gaedii* (Meigen, 1838) L
- *longimanus* (Kieffer, 1922) !

Protanypus Kieffer, 1906

- *caudatus* Edwards, 1924 ! [5]
- *forcipatus* (Egger, 1863) !
- *morio* (Zetterstedt, 1838) L

Pseudodiamesa Goetghebuer, 1939

(*Pseudodiamesa* s.str.)

- *branickii* (Nowicki, 1873) !
- *nivosa* (Goetghebuer, 1928) !

Pseudokiefferiella Zavrel, 1941

- *parva* (Edwards, 1932) !

Syndiamesa Kieffer, 1918

- *edwardsi* (Pagast, 1947) !
- *nigra* Rossaro, 1980 L [6]

Orthocladiinae

Acricotopus Kieffer, 1921

- *lucens* (Zetterstedt, 1850) !

Allocladius Kieffer, 1913

- *arenarius* (Strenzke, 1960) ! [42]

Brillia Kieffer, 1913

- *bifida* (Kieffer, 1909) !
 - = *modesta* (Meigen, 1830)
- *flavifrons* (Johannsen, 1905) !
- *longifurca* Kieffer, 1921 ! [7]

Bryophaenocladus Thienemann, 1934

- *femineus* (Edwards, 1929) !
- *helveticus* Moubayed-Breil, 2022 !
- *nidorum* (Edwards, 1929) L
- *subvernalis* (Goetghebuer, 1921) !

Camptocladius van der Wulp, 1874

- *stercorarius* (De Geer, 1776) L

Cardiocladius Kieffer, 1912

- *capucinus* (Zetterstedt, 1850) !

Chaetocladius Kieffer, 1911

(*Chaetocladius* s.str.)

- *castellae* Moubayed-Breil, 2018 !
- *coppai* Moubayed-Breil, 2017 ! [8]
- *curtistylus* (Goetghebuer, 1940) ! [9]
- *dentiforceps* (Edwards, 1929) !
- *dissipatus* (Edwards, 1929) L
- *insolitus* Caspers, 1987 L
- *laminatus* Brundin, 1947 L
- *lencioniae* Moubayed-Breil, 2018 !
- *lodsorozetae* Moubayed-Breil, 2018 !
- *macunensis* Moubayed-Breil, 2018 !
- *melaleucus* (Meigen, 1818) !
- *minutissimus* (Goetghebuer, 1942) L
- *muttensis* Moubayed-Breil, 2018 !
- *perennis* (Meigen, 1830) L
- *piger* (Goetghebuer, 1913) ! [10]
- *suecicus* (Kieffer, 1916) !

Corynoneura Winnertz, 1846

- *arctica* Kieffer, 1923 !
- *brevipennis* (Goetghebuer, 1913) L
- *carriana* Edwards, 1924 !
- *celtica* Edwards, 1924 !
- *coronata* Edwards, 1924 !
- *edwardsi* Brundin, 1949 !
- *lacustris* Edwards, 1924 L
- *lobata* Edwards, 1924 !
- *scutellata* Winnertz, 1846 !

Cricotopus van der Wulp, 1874

(*Cricotopus* s.str.)

- *albiforceps* (Kieffer, 1916) L
- *annulator* Goetghebuer, 1927 !
- *bicinctus* (Meigen, 1818) L
- *curtus* Hirvenoja, 1973 L
- *festivellus* (Kieffer, 1906) L
- *fuscus* (Kieffer, 1909) L
- *similis* Goetghebuer, 1921 L
- *tibialis* (Meigen, 1804) !

- *tremulus* (Linnaeus, 1758) L
- *triannulatus* Macquart, 1826 L
- *trifascia* Edwards, 1929 L
- *vierriensis* Goetghebuer, 1935 L
- (*Isocladius* Kieffer, 1909)
 - *intersectus* (Staeger, 1839) !
 - *laricomalis* Edwards, 1929 L
 - *obnixus* (Walker, 1856) L
 - *reversus* Hirvenoja, 1973 L
 - *sylvestris* (Fabricius, 1794) !
 - *tricinctus* (Meigen, 1818) L
 - *trifasciatus* (Meigen, 1810) L
- (*Nostococladius* Ashe & Murray, 1980)
 - *lygropis* Edwards, 1929 L
- Diplocladius* Kieffer, 1908
 - *cultriger* Kieffer, 1908 ! [11]
- Dratnalia* Saether & Halvorsen, 1981
 - *potamophylaxi* (Fittkau & Lellak, 1971) !
- Epoicocladius* Sulc & Zavrel, 1924
 - *ephemerae* (Kieffer, 1924) ! N1 [12]
- Eukiefferiella* Thienemann, 1926
 - *brevicalcar* (Kieffer, 1911) !
 - *claripennis* (Lundbeck, 1898) !
 - *clypeata* (Kieffer, 1923) L
 - *coerulescens* (Kieffer, 1926) !
 - *cyanea* Thienemann, 1936 L
 - *devonica* (Edwards, 1929) !
 - *dittmari* Lehmann, 1972 ! [13]
 - *fittkai* Lehmann, 1972 !
 - *fuldensis* Lehmann, 1972 !
 - *gracei* (Edwards, 1929) !
 - *ilkleyensis* (Edwards, 1929) !
 - *lobifera* Goetghebuer, 1934 !
 - *minor* (Edwards, 1929) !
 - *pseudomontana* Goetghebuer, 1935 L
 - *tirolensis* Goetghebuer, 1938 !
- Eurycnemus* Wulp, 1874
 - *crassipes* Meigen, 1810 L
- Euryhopsis* Oliver, 1981
 - *subviridis* (Siebert, 1979) !
- Georthocladus* Strenzke, 1941
 - *luteicornis* (Goetghebuer, 1941) ! [14]
- Gymnometriocnemus* Edwards, 1932
 - (*Gymnometriocnemus* s.str.)
 - *subnudus* (Edwards, 1929) L
- (*Rhaphidocladus* Saether, 1983)

- *brumalis* (Edwards, 1929) L
- *volitans* (Goetghebuer, 1940) L
- Heleniella* van der Wulp, 1874
 - *dorieri* Serra-Tosio, 1967 !
 - *helvetica* Moubayed-Breil, 2016 !
 - *ornaticollis* (Edwards, 1929) !
 - *serratosioi* Ringe, 1976 L
- Heterotanytarsus* Spärck, 1923
 - *apicalis* (Kieffer, 1921) ! [15]
- Heterotrissocladius* Spärck, 1923
 - *grimshawi* (Edwards, 1929) !
 - *marcidus* (Walker, 1856) !
 - *scutellatus* (Goetghebuer, 1942) !
- Hydrosmittia* Ferrington &, 2011
 - *brevicornis* Strenzke, 1950 ! [16]
 - *oxoniana* (Edwards, 1922) L
 - *ruttneri* Strenzke & Thienemann, 1942 !
- Krenosmittia* Thienemann & Krüger, 1939
 - *boreoalpina* (Goetghebuer, 1944) !
 - *camptophleps* (Edwards, 1929) !
- Larsia* Fittkau, 1962
 - *atrocincta/curticalcar* (Goetghebuer, 1942)/(Kieffer, 1918) ! [43]
- Limnophyes* Eaton, 1875
 - *angelicae* Saether, 1990 ! [17]
 - *asquamatus* Soegaard Andersen, 1937 !
 - = *squamatus* Soegaard Andersen, 1937 nec Kieffer, 1921
 - *bidumus* Saether, 1990 !
 - *brachytomus* (Kieffer, 1922) ! [18]
 - *difficilis* Brundin, 1947 ! [19]
 - *edwardsi* Saether, 1990 !
 - *gelasinus* Saether, 1990 ! [20]
 - *gurgicola* (Edwards, 1929) !
 - *habilis* (Walker, 1856) L
 - *knispelae* Moubayed & Lods-Crozet, 2023 !
 - *minus* (Meigen, 1818) !
 - *natalensis* (Kieffer, 1914) !
 - *ninae* Saether, 1975 ! [21]
 - *pentaplastus* (Kieffer, 1921) !
 - *pumilio* Holmgren, 1869 ! [22]
 - *punctipennis* Goetghebuer, 1921 L
 - *sartorii* Moubayed & Lods-Crozet, 2024 !
- Metriocnemus* Van der Wulp, 1874
(*Metriocnemus* s.str.)
 - *albolineatus* (Meigen, 1818) L
 - *beringensis* Cranston & Oliver, 1988 ! [44]
 - *brusti* Saether, 1989 ?

- *eurynotus* (Holmgren, 1883) !
= *hygropetricus* Kieffer, 1912
 - *fuscipes* (Meigen, 1818) !
 - *picipes* (Meigen, 1818) ! [23]
 - *tristellus* Edwards, 1929 ! [45]
 - *ursinus* (Holmgren, 1869) !
- Nanocladius* Kieffer, 1913
(*Nanocladius* s.str.)
- *balticus* (Palmen, 1959) L
 - *dichromus* (Kieffer, 1906) !
= *bicolor* (Zetterstedt, 1838)
 - *rectinervis* (Kieffer, 1911) L
- Orthocladius* Wulp, 1874
(*Eudactylocladius* Thienemann, 1935)
- *fuscimanus* (Kieffer, 1908) !
 - *olivaceus* (Kieffer, 1911) !
 - *priomixtus* (Saether, 2004) !
= *mixtus* (Holmgren, 1869)
- (*Euorthocladius* Thienemann, 1935)
- *ashei* Soponis, 1990 !
 - *luteipes* Goetghebuer, 1938 !
 - *rivicola* Kieffer, 1921 !
 - *rivulorum* Kieffer, 1909 !
 - *thienemanni* Kieffer, 1906 !
- (*Mesorthocladius* Sæther, 2005)
- *frigidus* (Zetterstedt, 1838) !
- (*Orthocladius* s.str.)
- *oblidens* (Walker, 1856) !
 - *pedestris* Kieffer, 1909 !
 - *rhyacobius* Kieffer, 1911 ! [24]
 - *rivinus* Kieffer, 1915 !
 - *rubicundus* (Meigen, 1818) !
 - *wetterensis* Brundin, 1956 L
- (*Pogonocladius* Brundin, 1956)
- *consobrinus* (Holmgren, 1869) L
- (*Symposiocladius* Cranston, 1982)
- *holsatus* Goetghebuer, 1937 !
 - *lignicola* Kieffer, 1915 !
 - *ruffoi* Rossaro, 1991 L
- Paracladius* Hirvenoja, 1973
- *alpicola* (Zetterstedt, 1830) !
 - *conversus* (Walker, 1856) L
- Paracricotopus* Thienemann & Harnisch, 1932
- *niger* (Kieffer, 1913) !
- Parakiefferiella* Thienemann, 1936
- *bathophila* (Kieffer, 1912) L

- *dentifera* (Wülker, 1957) L
- *gracillima* (Kieffer, 1924) !
- *minuta* Tuiskunen, 1986 ! [25]
- *normandia* Moubayed-Breil & Langton, 2008 ! [26]
- *triquetra* (Pankratova, 1970) ! [46]
- Parametrioctenus* Goetghebuer, 1931
 - *boreoalpinus* Gowin & Thienemann, 1942 ! N1 [27]
 - *stylatus* (Kieffer, 1924) L
- Paraphaenocladus* Thienemann, 1924
 - *exagitans monticola* Strenzke, 1950 L
 - *impensus* (Walker, 1856) ! N2
 - *irritus* (Walker, 1856) L
 - *pseudirritus* Strenzke, 1950 ! N2
- Parasmittia* Strenzke, 1950
 - *carinata* Strenzke, 1950 L
- Paratrichocladius* Santo-Abreu, 1918
 - *nivalis* (Goetghebuer, 1938) L
 - *rufiventris* (Meigen, 1830) !
 - *skirwithensis* (Edwards, 1929) ! N3
 - *spiesi* Ashe & O'Connor, 2012 L
- Paratrisocladus* Zavrel, 1937
 - *excerptus* (Walker, 1856) L
- Parorthocladus* Thienemann, 1935
 - *nudipennis* Kieffer in Kieffer & Thienemann, 1908 !
- Psectrocladius* Kieffer, 1906
 - (*Allopsectrocladius* Wülker, 1956)
 - *obvius* (Walker, 1856) !
 - (*Psectrocladius* s.str.)
 - *barbimanus* (Edwards, 1929) L
 - *brehmi* Kieffer, 1923 L
 - *limbatellus* (Holmgren, 1869) !
 - *octomaculatus* Wülker, 1956 L
 - *oxyura* Langton, 1984 L
 - *psilopterus* (Kieffer, 1906) L
 - *schlienzi* Wülker, 1956 L
 - *sordidellus* (Zetterstedt, 1838) !
 - *zetterstedti* Brundin, 1949 L
- Pseudorthocladus* Goetghebuer, 1932
 - (*Pseudorthocladus* s.str.)
 - *berthelemyi* Moubayed, 1990 !
 - *curtistylus* (Goetghebuer, 1921) !
 - *immezensis* Moubayed-Breil & Lods-Crozet, 2021 !
- Pseudosmittia* Goetghebuer, 1932
 - *albipennis* (Goetghebuer, 1921) !
 - = *curticosta* (Edwards, 1929)
 - *angusta* (Edwards, 1929) !

- *forcipata* (Goetghebuer, 1921) !
- *holsata* Thienemann & Strenzke, 1940 L
- Rheocricotopus* Thienemann & Harnisch, 1932
- (*Psilocricotopus* Sæther, 1985)
- *chalybeatus* (Edwards, 1929) L
- *tirolus* (Lehmann, 1969) !
- (*Rheocricotopus* s.str.)
- *effusus* (Walker, 1856) !
- *fuscipes* (Kieffer, 1909) !
- Smittia* Holmgren, 1869
- *alpicola* Goetghebuer, 1941 !
- *alpilonga* Rossaro, 2000 !
- *aterrima* (Meigen, 1818) L
- *contingens* Walker, 1856 ! [28]
- *edwardsi* Goetghebuer, 1932 !
- *foliosa* (Kieffer in Thienemann, 1921) ! [29]
- *nudipennis* (Goetghebuer, 1913) !
- *paranudipennis* Brundin, 1947 ! [30]
- *pratorum* (Goetghebuer, 1927) L
- *reissi* Rossaro & Orendt, 2001 ! [31]
- *rostrata* Goetghebuer in Schmölzer, 1962 !
- Stilocladius* Rossaro, 1979
- *montanus* Rossaro, 1979 !
- Symbiocladius* Kieffer, 1925
- *rhithrogenae* (Zayrel, 1924) !
- Synorthocladius* Thienemann, 1935
- *semivirens* (Kieffer, 1909) !
- Thienemannia* Kieffer, 1909
- *fulvofasciata* (Kieffer, 1921) L
- *gracei* (Edwards, 1929) L
- *gracilis* Kieffer, 1909 !
- Thienemanniella* Kieffer, 1911
- *caspersi* Sæther, 2003 !
- *clavicornis* (Kieffer, 1911) L [32]
- Tokunagaia* Sæther, 1973
- *rectangularis* (Goetghebuer, 1940) !
- Tvetenia* Kieffer, 1922
- *bavarica* (Goetghebuer, 1934) !
- *calvescens* (Edwards, 1929) !
- *verralli* (Edwards, 1929) L

Prodiamesinae

- Monodiamesa* Kieffer, 1922
- *alpicola* (Brundin, 1952) L
- Odontomesa* Pagast, 1947
- *fulva* (Kieffer, 1919) !

Prodiamesa Kieffer, 1906

- *olivacea* (Meigen, 1818) !

Tanypodinae

Ablabesmyia Johannsen, 1905

(*Ablabesmyia* s.str.)

- *longistyla* Fittkau, 1962 !
- *monilis* (Linnaeus, 1758) !
- *phatta* (Eggert, 1863) !

Apsectrotanypus Fittkau, 1962

- *trifascipennis* (Zetterstedt, 1838) L [33]

Arctopelopia Fittkau, 1962

- *barbitarsis* (Zetterstedt, 1850) L
- *griseipennis* (van der Wulp, 1858) L

Clinotanypus Kieffer, 1913

- *nervosus* (Meigen, 1818) !

Conchapelopia Fittkau, 1957

- *melanops* (Meigen, 1818) !

Guttipelopia Fittkau, 1962

- *guttipennis* (van der Wulp, 1861) ! [34]

Krenopelopia Fittkau, 1962

- *binotata* (Wiedemann, 1817) L

Macropelopia Thienemann, 1916

- *fehlmanni* (Kieffer, 1912) !
- *fittkai* Ferrarese & Ceretti, 1987 ! [35]
- *nebulosa* (Meigen, 1804) L
- *notata* (Meigen, 1818) !

Monopelopia Fittkau, 1962

- *tenuicalcar* (Kieffer, 1918) !

Natarsia Fittkau, 1962

- *punctata* (Meigen, 1804) L

Nilotanypus Kieffer, 1923

- *dubius* (Meigen, 1804) L

Paramerina Fittkau, 1962

- *cingulata* (Walker, 1856) !

Pentaneurella Fittkau & Murray, 1983

- *katterjokki* Fittkau & Murray, 1983 L

Procladius Skuse, 1889

(*Holotanypus* Roback, 1982)

- *choreus* (Meigen, 1804) !
- *culiciformis* (Linnaeus, 1767) ! [36]
- = *pectinatus* Kieffer, 1909
- *sagittalis* (Kieffer, 1909) !
- *signatus* (Zetterstedt, 1850) !
- *simplicistilus* Fremann, 1948 !
- *tatrensis* Gowin, 1944 ! [37]

Psectrotanypus Kieffer, 1909

- *varius* (Fabricius, 1787) !

Tanypus Meigen, 1803

(*Tanypus* s.str.)

- *kraatzi* (Kieffer, 1912) !

- *punctipennis* Meigen, 1818 !

- *vilipennis* (Kieffer, 1918) !

Telmatopelopia Fittkau, 1962

- *nemorum* (Goetghebuer, 1921) !

Thienemannimyia Fittkau, 1957

- *geijskesi* (Goetghebuer, 1934) L

- *northumbrica* (Edwards, 1929) L [38]

Trissopelopia Kieffer, 1923

- *longimanus* (Staeger, 1839) ! [39]

Xenopelopia Fittkau, 1962

- *nigricans* (Goetghebuer, 1927) !

Zavrelimyia Fittkau, 1962

- *barbatipes* (Kieffer, 1911) L

- *melanura* (Meigen, 1804) !

- *punctatissima* (Goetghebuer, 1934) L [40]

Excluded species

Paratrichocladius smolandica (Brundin, 1947) N4

Parorthocladius nigritus (Goetghebuer, 1938)

Smittia leucopogon (Meigen, 1804)

Notes

- N1 *Epoicocladius ephemeræ* and *Parametricnemus boreoalpinus*: new species for Switzerland, first observed by the Biodiversity Monitoring Schweiz 2018.
- N2 *Paraphaenocladius impensus* and *P. pseudirritus* have been added in the 3rd Supplement to the Checklist (Bächli et al. 2014) based on material published by the author (Lods-Crozet 2012). However the identifications of these two species have not been confirmed by a specialist of the genus and remain therefore tentative.
- N3 The occurrence of *Paratrichocladius skirwithensis* in Switzerland is considered as doubtful in Fauna Europaea. The identity of the material seen by the author has not been checked by a specialist of the genus and remains therefore tentative.
- N4 *Paratrichocladius smolandica* (Brundin, 1947) was erroneously listed in the 1998 Checklist. This species does not exist and the name is therefore removed from the present list.

Species records

- [1] 1L, TI, Lago Tomeo outlet, 29.9.2021, 1692 m, leg. Chiara Pradella Caissutti
- [2] 2N, VD, étang Avale, 23.5.2021, 385 m, leg. DGE_EAU_VD
- [3] 1L, GR, Morteratsch stream, 2014, leg. Roman Alther (EAWAG)
- [4] 1M, GR, Macun, Lej Immez outlet, 30.7.2021, 2612 m, leg. Christopher Robinson (EAWAG)
- [5] 1N, GR, Parc national suisse, Macun Lej Immez, 2013, leg. Brigitte Lods-Crozet (MZL)
- [6] 1L, TI, lagetto Superiore, 1991, leg. Angela Boggero (INRC)
- [7] 1N, VD, Rivière: Grande Eau, station amont Aigle, 13.3.2012, leg. DGE_EAU_VD
- [8] 1M, VS, Gletschboden, 30.9.1998, 1775 m, leg. Sandra Knispel (MZL)
- [9] 1M, VS, Gletschboden downstream Muttbach, 17.6.1998, 1790 m, leg. Sandra Knispel (MZL)

- [10] 1L, TI, Iagetto Superiore, 1991, leg. Angela Boggero (INRC)
- [11] 1L, TI, Lago Bianco, 2009, leg. Angela Boggero (INRC)
- [12] 3L, ZH, Dachseggbächli, Rüti, 10.4.2018, leg. Remo Wüthrich
- [13] 1L, IN, GR, Macun, 17.7.2002, leg. Christopher Robinson (EAWAG)
- [14] 1N, GR, Macun, Lej Immez outlet, 30.7.2021, 2612 m, leg. Christopher Robinson (EAWAG)
- [15] 1L, IN, TI, Iagetto Superiore, 1991, leg. Angela Boggero (INRC)
- [16] 1M, VS, Rhône, Gletschboden, 17.6.1998, 1790 m, leg. Sandra Knispel (MZL)
- [17] 1M, VS, Gletschboden, 30.9.1998, 1775 m, leg. Sandra Knispel (MZL)
- [18] 1M, VS, Gletschboden, 30.9.1998, 1775 m, leg. Sandra Knispel (MZL)
- [19] 1M, VS, Gletschboden, 30.9.1998, 1775 m, leg. Sandra Knispel (MZL)
- [20] 1M, VS, Gletschboden, 30.9.1998, 1775 m, leg. Sandra Knispel (MZL)
- [21] 1M, VS, Gletschboden, 30.9.1998, 1775 m, leg. Sandra Knispel (MZL)
- [22] 1M, VS, Gletschboden, 30.9.1998, 1775 m, leg. Sandra Knispel (MZL)
- [23] 10M, TI, Bolle di Magadino, 2001, leg. Fondazione Bolle di Magadino
- [24] 1N, VD, Grande Eau, les Diablerets, 18.4.2012, leg. DGE_EAU_VD
- [25] 1M, VS, Affluent Muttbach, .9.1997, 2500 m, leg. Brigitte Lods-Crozet (LEBA)
- [26] 1M, VS, Rhône, Gletschboden, 17.6.1998, 1790 m, leg. Sandra Knispel (MZL)
- [27] 2N, VD, Puidoux, 9.4.2018, leg. DGE_EAU_VD
- [28] 1M, VS, Rhône, Gletschboden, 17.6.1998, 1790 m, leg. Sandra Knispel (MZL)
- [29] 1M, VS, Rhône, Gletschboden, 17.6.1998, 1790 m, leg. Sandra Knispel (MZL)
- [30] 1M, VS, Rhône, Gletschboden, 17.6.1998, 1790 m, leg. Sandra Knispel (MZL)
- [31] 1M, GR, Swiss National Park, Macun, 2013, leg. Brigitte Lods-Crozet (MZL)
- [32] 1N, TI, Naret piccolo, 1993, leg. Angela Boggero (INRC)
- [33] 1N, TI, Lago Starlarescio, 2003, leg. Angela Boggero (INRC)
- [34] 1L, SO, Burgäschisee, 2013
- [35] 2P, VS, Muttbach, 8.7.2022, 2100 m, leg. Brigitte Lods-Crozet (MZL)
- [36] VD, Lausanne, Grangette 5d, 18.6.2021, 627 m, leg. Christian Widmann
- [37] 1N, GR, Swiss National Park, Macun, 2011, leg. Uta Mürle
- [38] 1N, TI, Iagetto Superiore, 1991, leg. Angela Boggero (INRC)
- [39] 1N, TI, Lago Tomeo, 2004, leg. Angela Boggero (INRC)
- [40] 1N, TI, Iagetto Superiore, 1991, leg. Angela Boggero (INRC)
- [41] 8M, TI, Bolle di Magadino, 31.05.2021, leg. Fondazione Bolle di Magadino
- [42] 1L, TP, GR, Macun, pond M11, 29.07.2004, leg. HEPIA
- [43] 3P, VD, cours d'eau du bois du Jorat, 5.7.2023, leg. DGE_EAU_VAUD
- [44] 1M, TI, Bolle di Magadino, 29.04.2022, leg. Fondazione Bolle di Magadino
- [45] 1M, GR, Macun, Lake Grond, 30.07.2014, leg. Brigitte Lods-Crozet (MZL)
- [46] BE, Thunersee, 2013, leg. Noëmi Zweifel

References

- Andersen T., Cranston P.S. & Epler J.H. 2013. Chironomidae of the Holarctic region. Keys and diagnoses. Larvae. *Insect Systematics & Evolution, Suppl.* 66, 574 pp.
- Armitage P.D., Pinder L.C. & Cranston P. (eds). 1995. *The Chironomidae. Biology and ecology of non-biting midges.* Chapman & Hall, New York, 572 pp.
- Bächli G., Merz B. & Haenni, J.-P. 2014. Dritter Nachtrag zur Checkliste der Diptera der Schweiz. *Entomologia Helvetica* 7: 119-140.
- Brooks S.J., Langdon P.G. & Heiri O. 2007. The identification and use of Palaearctic Chironomidae larvae in palaeoecology. *Quaternary Research Association Technical Guide* 10, 276 pp.
- Ferrarese U. 1983. Chironomidi 3 (Diptera: Chironomidae: Tanytopodinae), Guide per il riconoscimento delle specie animali delle acque interne italiane n° 26, Verona, 67 pp.
- Ferrarese U. & Rossaro B. 1981. Chironomidi 1 (Diptera, Chironomidae: Generalità, Diamesinae, Prodiamesinae), Guide per il riconoscimento delle specie animali delle acque interne italiane n° 12, Verona, 97 pp.

- Heiri O., Wick L., van Leeuwen J.F.N., van der Knaap W.O. & Lotter A.F. 2003. Holocene tree immigration and the chironomid fauna of a small Swiss subalpine lake (Hinterburgsee, 1515 m asl). *Palaeogeography, Palaeoclimatology, Palaeoecology* 189: 35-53.
- Langton P.H. 1991. A key to pupal exuviae of West Palaearctic Chironomidae. Privately published by P.H. Langton, 5 Kylebeg Av., Mountsandel, Cleraine, Co. Londonderry, Northern Ireland, 386 pp.
- Langton P.H. & Pinder L.C.V. 2007. Keys to the Adult Male Chironomidae of Britain and Ireland. Published in 2 Volumes including a special supplement identifying sixteen species recently recorded from Britain and Ireland. Freshwater Biological Association, Scientific publication n° 64, Volume 1, 240 p., Volume 2, 168 pp.
- Langton P.H. & Visser H. 2003. Chironomidae exuviae. A key to pupal exuviae of the West Palaearctic region - CD, ETI, Amsterdam.
- Lods-Crozet M. 1998. 21. Chironomidae. In: Merz B., Baechli G., Haenni J.-P. & Gonseth Y. (eds). *Diptera - Checklist. Fauna Helvetica* 1: 92-101, CSCF / SEG, Neuchâtel, 369 pp.
- Lods-Crozet B. 2012. Les insectes méconnus des torrents alpins – Diversité des Chironomidés (Insecta: Diptera) dans le système glaciaire du Haut-Rhône valaisan. *Bulletin de la Murithienne* 129: 43-61.
- Lods-Crozet B. 2022. Deux Chironomidae (Diptera, Nematocera) commensaux nouveaux pour la Suisse. *Entomo Helvetica* 15: 93-95.
- Merz B., Bächli G. & Haenni J.-P. 2002. Erster Nachtrag zur Checkliste der Diptera der Schweiz. *Mitteilungen der Entomologischen Gesellschaft Basel* 51(3-4)(2001): 110-140.
- Merz B., Bächli G. & Haenni J.-P. 2006. Zweiter Nachtrag zur Checkliste der Diptera der Schweiz. *Mitteilungen der Entomologischen Gesellschaft Basel* 56: 135-165.
- Moubayed-Breil J. & Lods-Crozet B. 2016. *Heleniella helvetica* sp. n., a cold stenothermic species inhabiting the upper Rhône catchment in central Switzerland [Diptera, Chironomidae, Orthoclaadiinae]. *Journal of Entomological and Acarological Research* 48: 339-344.
- Moubayed-Breil J. & Lods-Crozet B. 2018. On the genus *Chaetocladius* s. str. Kieffer, 1911 from Switzerland with descriptions of five new relic species occurring in glacial alpine springs and streams (Diptera, Chironomidae). *Alpine Entomology* 2: 15-34.
- Moubayed-Breil J. & Lods-Crozet B. 2021. *Pseudorthocladus immezensis* sp. n., a new relict species inhabiting the Macun high-alpine stream, Swiss Alps [Diptera, Chironomidae]. *Chironomus Journal of Chironomidae Research* 34: 13-20.
- Moubayed-Breil J. & Lods-Crozet B. 2022. On the genus *Bryophaenocladus* Thienemann, 1934. I. Taxonomic notes with description of new species (Diptera: Chironomidae, Orthoclaadiinae). *Eurasian Entomological Journal* 21: 212-224.
- Moubayed-Breil J. & Lods-Crozet B. 2023. *Limnophyes knispelae* sp. n. and *L. sartorii* sp. n., two new crenophilous species from the Swiss Alps (Chironomidae, Orthoclaadiinae). *Chironomus Journal of Chironomidae Research* 37:48-58.
- Nocentini A. 1985. Chironomidi 4 (Diptera: Chironomidae: chironomidae, larve), Guide per il riconoscimento delle specie animali delle acque interne italiane n° 29, Verona, 186 pp.
- Orendt C. 2008. Adaptations and extensions to the « Guide to the identification of genera of chironomid pupal exuviae occurring in Britain and Ireland » (Wilson & Ruse 2005) for the Central European fauna and adjacent areas. *Lauterbornia* 64: 1-28.
- Orendt C. & Spies M. 2012. Chironomini (Diptera: Chironomidae: Chironominae). Keys to Central European larvae using mainly macroscopic characters. Second, revised edition. Leipzig, 64 p.
- Rossaro B. 1982. Chironomidi 2 (Diptera Chironomidae: Orthoclaadiinae), Guide per il riconoscimento delle specie animali delle acque interne italiane n°16, Verona, 80 pp.
- Ryser H.M., Scholl A. & Wülker W. 1983. Revision der Gattung *Chironomus* Meigen (Diptera) VII: *C. muratensis* n. sp. und *C. nudiventris* n. sp., Geschwisterarten aus der *plumosus*-Gruppe. *Revue Suisse de Zoologie* 90: 299-316.
- Schmid P.E. 1993. A key to the larval Chironomidae and their instars from Austrian Danube region streams and rivers. Part 1: Diamesinae, Prodiamesinae and Orthoclaadiinae. *Wasser und Abwasser Supplementband*, 3/93: 1-513.
- Shilova A.I. 1980. K sistematike roda Einfeldia Kieffer (Diptera, Chironomidae). On the systematics of the genus Einfeldia Kieffer (Diptera, Chironomidae). *Trudy, Institut Biologii Vnutrennikh Vod Akademii Nauk SSSR* 41: 162-191.
- Spies M. & Saether O.A. 2004. Notes and recommendations on taxonomy and nomenclature of Chironomidae (Diptera). *Zootaxa* 752: 1-90.

- Spies M. & Saether O.A. 2013. Fauna Europaea: Chironomidae. In De Jong, H. (Ed.): Fauna Europaea: Diptera Nematocera. – Fauna Europaea version 1.X, <https://fauna-eu.org/>
- Vallenduuk H.J. 2017. Chironomini larvae of western European lowlands (Diptera: Chironomidae). Keys with notes to the species. *Lauterbornia* 82: 1-216.
- Vergon J.-P. & Bourgeois C. 1993. Les larves de Diptères Chironomidae: 1. Caractères généraux et clés d'identification des tribus. *Bull. mens. Soc. linn. Lyon* 62: 101-132.
- Widmann C., Lods-Crozet B. & Brodin Y. 2023. Première documentation pour la Suisse de *Procladius* (*Holotanypus*) *culiciformis* (Linnaeus, 1767) (Diptera: Chironomidae). *Entomo Helvetica* 16: -.
- Wiederholm T. 1986. Chironomidae of the Holarctic region. Keys and diagnoses. Part 2. Pupae. *Entomologica Scandinavica Supplement* 28: 1-482.
- Wiederholm T. 1989. Chironomidae of the Holarctic region. Keys and diagnoses. Part 3. adult males. *Entomologica Scandinavica Supplement* 34: 1-482.
- Wilson R.S. & Ruse L.P. 2005. A guide to the identification of genera of chironomid pupal exuviae occurring in Britain and Ireland (including common genera from Northern Europe) and their use in monitoring lotic and lentic freshwaters. Freshwater Biological Association, Scientific publication n° 13, 176 pp.