

## Braulidae

Gerhard Bächli (1998 Checklist: Walter Büttiker)

Last update: Jul 2024

**Diagnosis:** Small (less than 2 mm), wingless flies; body reddish to dark brown, flattened dorsoventrally. Head broad, short and with minute eye spots; ocelli absent. Thorax short, with strongly reduced sclerites. Wings, scutellum, halteres and calypteres absent. Legs relatively long and strongly built; tarsal segments short and broad; tarsal claws in the shape of combs of teeth. Abdomen broad and flattened; tergites with many strong setae, especially laterally.

**Biology:** The Braulidae are well-known as « bee-lice » in the nests of honeybees (*Apis* spp.). The larvae are commensals, living in cells in the nest and feeding on pollen, honey and organic debris. Adults are « food-parasites » of adult bees, attaching themselves to the body of the queen (rarely of a worker) and feeding on liquids from the mouth-opening of the bee.

**Nomenclature and classification:** According to Papp (1998), Carles-Tolrá (2007).

**Number of species:** CH:1 (1998 Checklist: 1),  
BE: 2, CZ: 1, DE: 1, IT: 2, NL: 1, UK: 2, Europe: 3, World: 7.

**Level of faunistic knowledge in Switzerland:** Good.

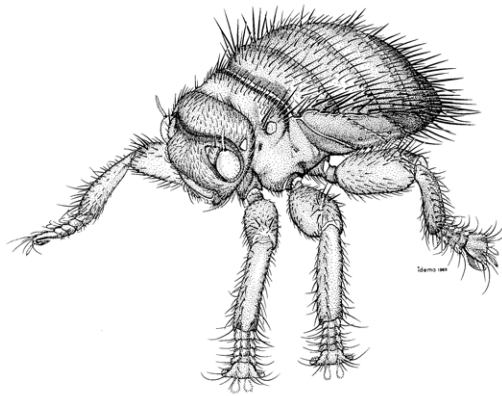
**General references:** Dobson (1999) [key, British Isles], Öroösi-Pál (1966) [key], Papp (1998) [general].

**References to the Swiss fauna:** Büttiker (1994, 1998).

## Checklist

*Braula* Nitzsch, 1818

- *coeca* Nitzsch, 1818 !



*Braula coeca*,  
female (MND2, p.913).

## References

- Büttiker W. 1994. Die Lausfliegen der Schweiz (Diptera, Hippoboscidae) mit Bestimmungsschlüssel. Documenta Faunistica Helveticae 15: 1-117.
- Büttiker W. 1998. 90. Braulidae. In: Merz B., Bächli G., Haenni J.-P. & Gonseth Y. (eds). Diptera - Checklist. Fauna Helvetica 1: 300. CSCF / SEG, Neuchâtel, 369 pp.
- Carles-Tolrà M. 2007. Fauna Europaea: Braulidae. In: Pape T. (ed). Fauna Europaea: Diptera, Brachycera. Fauna Europaea version 1.3. <http://www.faunaeur.org> (Accessed 9 Sept 2009).
- Dobson J.R. 1999. A « bee-louse » *Braula schmitzi* Örösi-Pál (Diptera: Braulidae) new to the British Isles, and the status of *Braula* spp. In England and Wales. British Journal of Entomology and Natural History 11:139-148.
- Örösi-Pál Z. 1966. Die Bienenlaus Arten. Angewandte Entomologie 7: 138-171.
- Papp L. 1998. 3.29. Family Braulidae. In: Papp L. & Darvas B. (eds). Contributions to a Manual of Palaearctic Diptera (with special reference to flies of economic importance). Vol. 3., Higher Brachycera: 325-330. Science Herald, Budapest, 880 pp.